

# THE SPORTS AUTHORITY AT PALM BEACH GARDENS

LYING IN THE NORTHEAST QUARTER OF  
SECTION 19, TOWNSHIP 42 SOUTH, RANGE 43 EAST  
CITY OF PALM BEACH GARDENS, PALM BEACH COUNTY, FLORIDA  
PAGE 2 OF 2

JANUARY 27, 1997



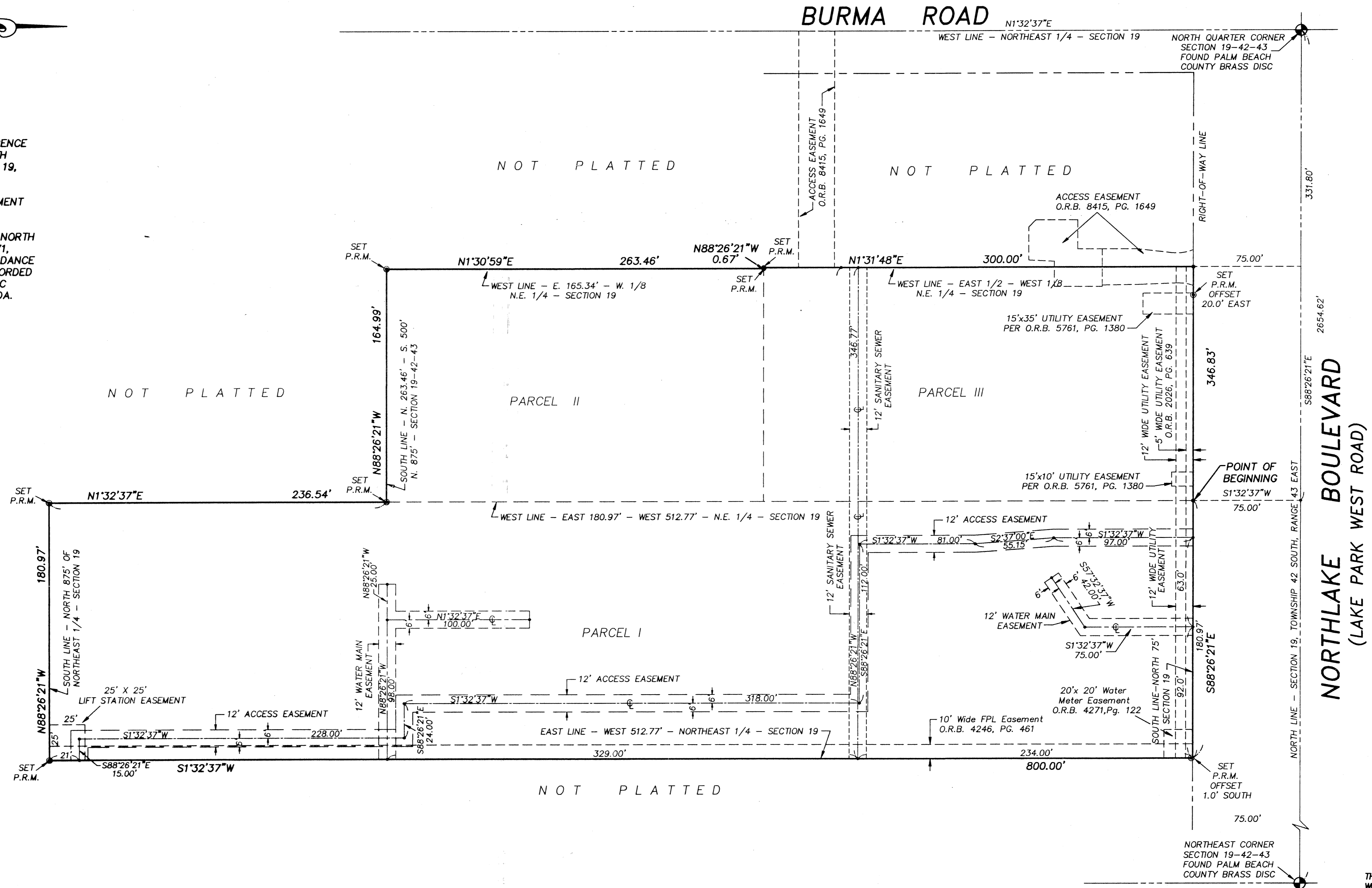
SCALE: 1" = 40'

**NOTES:**

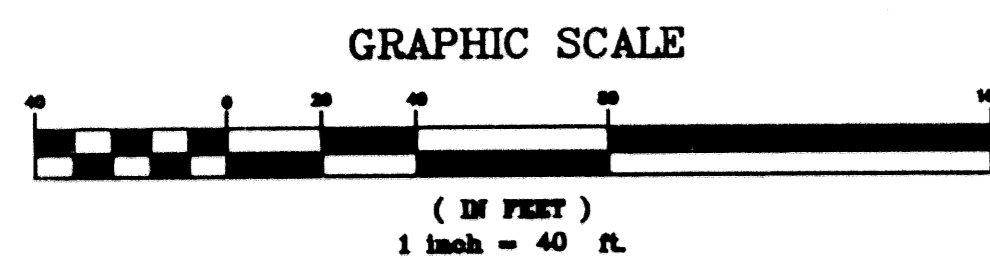
1. BEARINGS ARE BASED ON ASSUMED REFERENCE BEARING OF S88°26'21"E ALONG THE NORTH LINE OF THE NORTHEAST 1/4 OF SECTION 19, TOWNSHIP 42 SOUTH, RANGE 43 EAST.
2. SET P.R.M. = SET 4"x4" CONCRETE MONUMENT (RLS 1812)
3. 12' WIDE ACCESS EASEMENT, EXCEPT THE NORTH 5 FEET THEREOF, RECORDED IN O.R.B. 4271, PAGE 124, HAS BEEN RELEASED IN ACCORDANCE WITH PARTIAL RELEASE OF EASEMENT RECORDED IN O.R.B. 92483, PAGE 1813, OF THE PUBLIC RECORDS OF PALM BEACH COUNTY, FLORIDA.

**LEGEND**

- P.R.M. = 4"x4" CONCRETE MONUMENT
- P.B. = PLAT BOOK
- O.R.B. = OFFICIAL RECORDS BOOK
- PG. = PAGE



THE SPORTS AUTHORITY AT PALM BEACH GARDENS  
 SUBDIVISION # Palm Beach Gardens  
 BOOK 79 PAGE 45  
 FLOOD ZONE FLOOD MAP #  
 QUAD # ZONING  
 SE ZIP CODE  
 PUD NAME CITY OF PALM BEACH



NOTICE: THERE MAY BE ADDITIONAL RESTRICTIONS  
THAT ARE NOT RECORDED ON THIS PLAT THAT MAY  
BE FOUND IN THE PUBLIC RECORDS OF THIS COUNTY.

THIS PLAT PREPARED BY:  
WILLIAM E. POWELL, P.L.S.

## CHP

CANTELOU, HERRERA & POWELL, INC.  
ARCHITECTURE • ENGINEERING • SURVEYING • PLANNING  
1370 SARNO ROAD, SUITE G, MELBOURNE, FLORIDA 32935  
(407) 259-1525 L.B. # 8606 Fax 407-259-4185